

Monthly Progress Report For August 2012

Pitch roof & Lower roof (between conserved and annex building) completed.

2nd STY Ceiling works in progress at Galleria, waiting room, dressing room, breakout room 1 and completed at Toilet, Breakout room 2. **Main temple** is in progress with running of duct (85%) completed, ceiling works in progress.

Erection of light weight wall at waiting room was completed. Plastering, repairing, remodelling, painting are in progress at the whole 2nd floor.

ACMV & Electrical completed 85% at the 2nd floor. Door frames have been installed. Cat ladder has been installed.

1st STY St 05 fire rated ceiling & ceiling completed. **St04** ceiling, hand rail, completed, putty and painting in progress. **Passage to bar** ceiling, lighting, painting completed. **Side wings** completed (roof, glass curtain, timber floor, ACMV & Electrical, painting). Alteration of staircase 06 completed. **Glass canopy** completed at vertical platform lift and staircase (left wing). **Timber floor** at 1st STY (replacement and repairing) completed, grinding and polishing in progress. Doors have been installed. Timber screen is in progress.

Basement Erection of **ventilated wall** completed at the basement floor. ACMV & Electrical, plumbing, painting all completed. Installation of doors in progress.

Façade, Car Poach & Drive way painting works completed at facades. Installation of light cove and electrical in progress at car poach. Drive way still in progress. Car park lots are in progress.



Pitch roof & lower roof completed



Toilet at 2nd STY (ceiling, fire rated wall, painting) completed



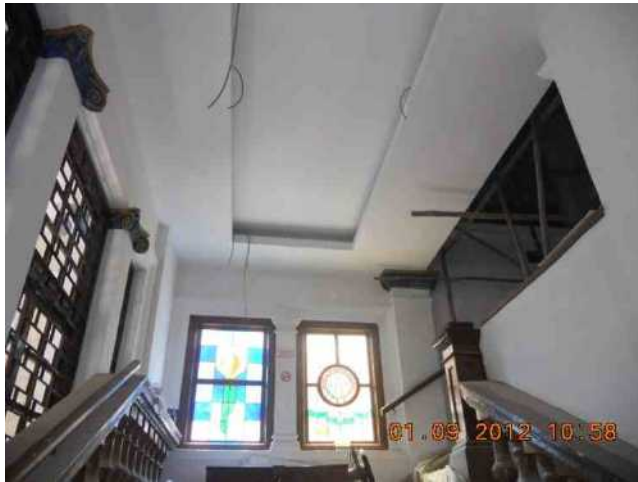
Ceiling work completed at breakout room 2



Ceiling works in progress at breakout room 1



St-04 and passage to basement bar completed with tiling on floor.



Fire rated & ceiling works done at St -05



2nd STY toilet completed with sanitary fittings



Construction of ramp at 2nd STY link way was completed



Erection of light weight wall completed, plastering in progress at 2nd STY (waiting room & dressing room)



Right side wing completed (glass curtain wall, roof, timber floor, painting, smoothing of column, ACMV & electrical)



Glass canopy completed at both vertical platform lift & St 06.



Left side wing completed (timber floor, glass curtain wall, smoothing of column, painting, ACMV & electrical)



Construction of car park lots in progress.



Basement ramp completed with handicap hand rail



Car poach in progress with painting, installation of cove light, repairing modules of pillar and plastering



Polishing in progress at 1st STY restaurant floor



Doors installed at 1st STY



Timber screen in progress



1st STY toilet completed