

Monthly Progress And Final Report for Phase2

ROOF

The existing roof was completed with laying of granite chip concrete and water proof membrane .Replacement of timber battens, replacement of aluminium foil, and rock wool for heat & fire protection at **Pitch roof** was completed. Spraying of anti-termite chemical done between ceiling and pitch roof at main temple.

2ND Storey

Ceiling works at 2nd storey has been completed all the room including main temple room. **Electrical** and ACMV completed with all necessary installation. Control panel at main temple room was still in commence. Replacement of **carpet tiles** at breakout room2 and reflection room has been completed. Laying of **vinyl tiles** completed at existing waiting room. **Painting** work has been completed all the ceiling and walls .Relaying of new **tiles** (wall & floor), installation of new urinal, water closet, sanitary accessories have been completed at 2nd storey **toilet**. **Polishing** of existing vinyl tiles was completed at all room.

1st Storey

Both side wings have been completed with composite roof, glass curtain wall, **timber flooring, intumescent paint** (2-hr fire rated) at column and beams. **Electrical & ACMV** completed all necessary installation at the whole 1st storey. Polishing & **Varnishing** for timber floor at 1st storey have been completed. Installation of fire rated **frames & doors**, erection and installation of **fire rated board** at (St04), (St05) and visitor centre had been completed. **Toilet** at 1st storey had been completed with water closet, urinal, basin and all sanitary accessories. Applied **vermiculite** paint on I beams at passage way to basement bar had been completed. Laying of **floor tiles** at visitor centre, staircase 04(access to basement bar), toilet (including wall tiles) completed.

Basement

Forming a store room and erection of **ventilated wall** completed at the whole basement. Ceiling had been painted. **Fire rated** frame & doors have been completed. Construction of **ramp** and **Gen-set completed**. **Car poach** was constructed with non-suspended slab& **pebble wash** finished.

Landscape, car **park** lots (turfing) and drive **way** (tarmac finished) are completed. **Gate** for the car park lots and garden have been completed.



Pitch roof completed with colour painted.



Flat roof with water proof membranes finished



Existing store (Club house)



BREAKOUT ROOM 1 ceiling with cove light &ACMV



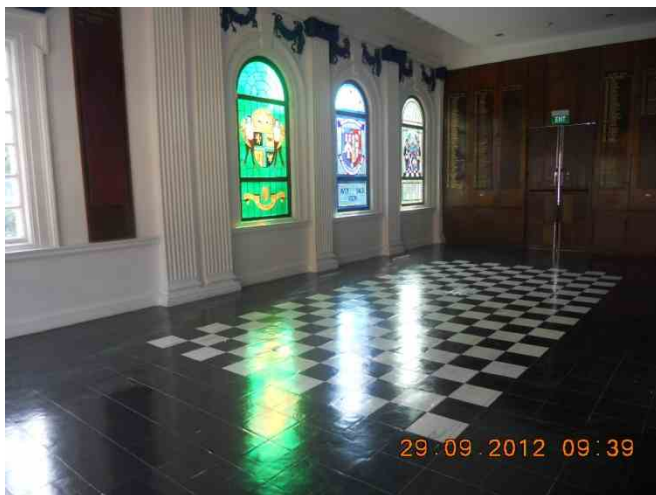
REFLECTION ROOM with carpet finished



WAITING ROOM with vinyl tiles completed



GALLERIA completed with ceiling, cove light & ACMV



MULTI-PURPOSE ROOM



BREAKOUT ROOM 2 carpet finished.



MAIN TEMPLE ROOM completed with new ceiling & ACMV



Completed with fire rated door @ staircase lobby



Toilet @ 2nd STY completed basin, WC & sanitary wares



Sensor Urinal @ 2nd STY TOILET





Staircase to 2nd STY completed with fire rated ceiling



Toilet @ 1st STY



Completed with WC, urinal & sanitary accessory



Basin, mirror & hand dryer completed



Staircase to basement completed with floor tiles & hand rail



1st STY timber floor finished & ACMV complete



Entrance to basement bar



Basement bar completed with ventilated wall



Fire rated door to link way



STORE ROOM



Handicap Ramp to annex building



Lift lobby @ 1st STY



Back facades with smooth finished



Link to Kitchen



Car park lots are provided with grass cell.



Gate and gate wall completed



Gen-set and garden were completed.



Gate door to 1STY restaurant



Car poach with cove lighting



Non suspended slab with pebble wash finished@ car poach



Drive way completed with Tarmac finished.



Facades completed by re plastering & painting



Side facades also completed with re plastering & paint